

Bitternut Hickory (*Carya cordiformis*)

Origin: Native.

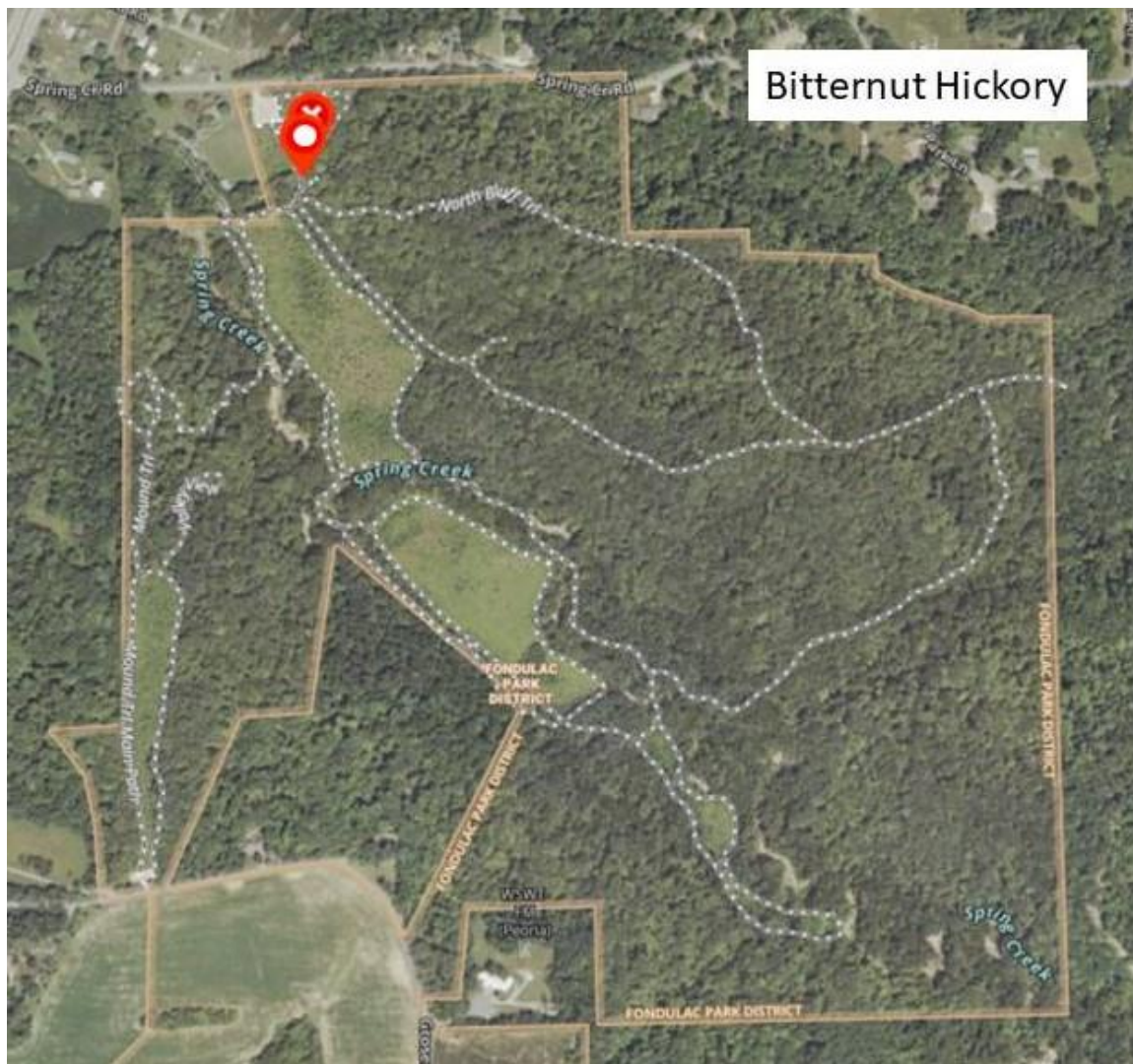
Status in Park: Widespread. Moist sites along creek to bluff tops.

Characteristics: Reaching 100 feet tall, 2 ½ feet in diameter, crown broadly rounded, often irregular; bark of mature trees with flat, shallow, grayish ridges (not shaggy), young bark smooth with pale vertical lines; flowers in slender, drooping catkins; fruit a nut, with a spherical yellowish husk about 1 ¼ inch in diameter, nuts very bitter.

Leaves: Alternate, pinnately compound, with 7-9 leaflets, each up to 6 inches long; edges with fine teeth; shiny dark green above, paler and usually hairy beneath.



Location of tagged trees:



White-centered symbol indicates leaves are too high to be easily seen.

Notes: Bitternut wood is brittle but very shock-resistant. It is used in tool handles, sporting goods, paneling and furniture. The nuts are 1-1.5 inches long and are thin shelled, but they are very bitter and not useful as food. The trees have distinctive yellow buds that aid in identification.

