

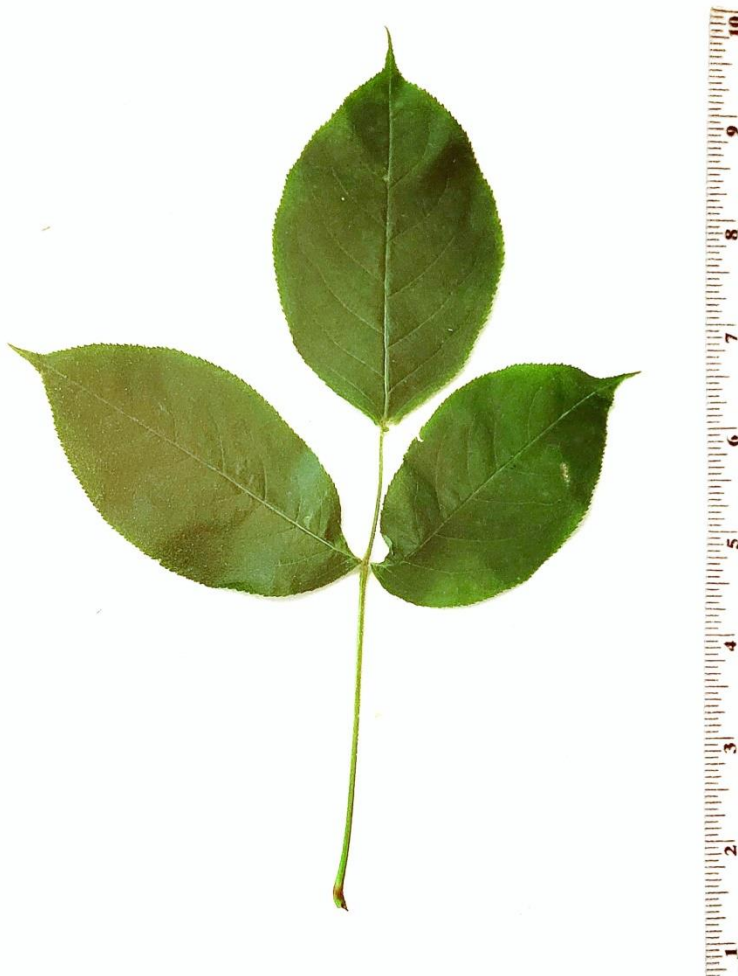
Bladdernut (*Staphylea trifolia*)

Origin: Native.

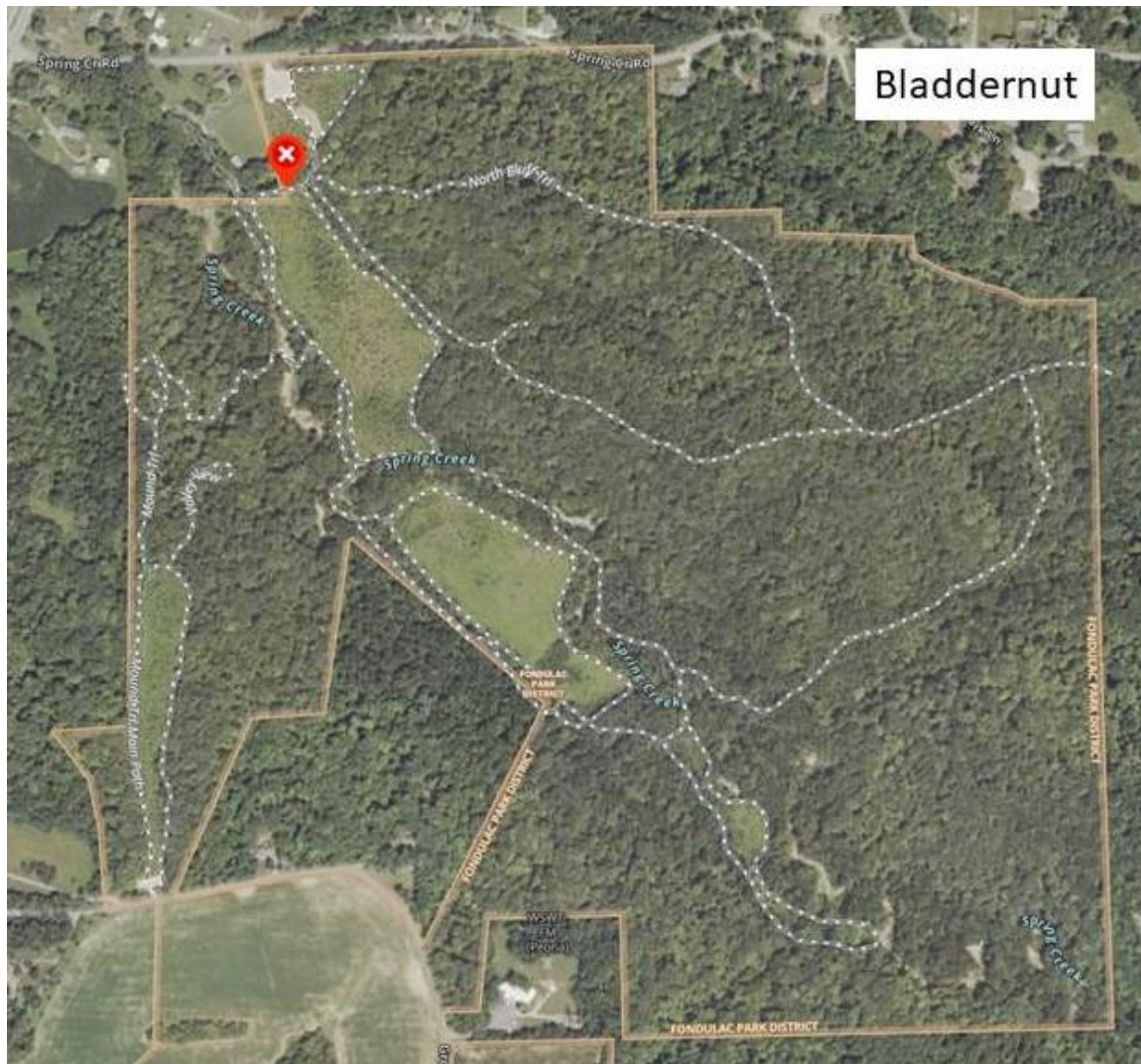
Status in Park: Occasional. Where present, grows in groups, spreading by root suckers. In moist woods and on field edges.

Characteristics: Reaches 20 feet tall, up to 4 inches in diameter; crown rounded; bark greenish in young trees, with mottled stripes, becomes gray to brown with age; flowers greenish white, about 3/8 inches long, in drooping clusters, April-May; fruits inflated, thin-walled capsules, green to yellowish brown, 1 to 2 ½ inches long.

Leaves: Opposite, pinnately compound, with 3 leaflets 1 ½ to 4 inches long; edges with very fine teeth; dark green and smooth above, paler and slightly hairy below.



Location of tagged tree:



Notes: An attractive shrub of field edges and moist woods in the park. It has distinctive seed pods that give the plant its name.

