

Hop Hornbeam (*Ostrya virginiana*)

Origin: Native.

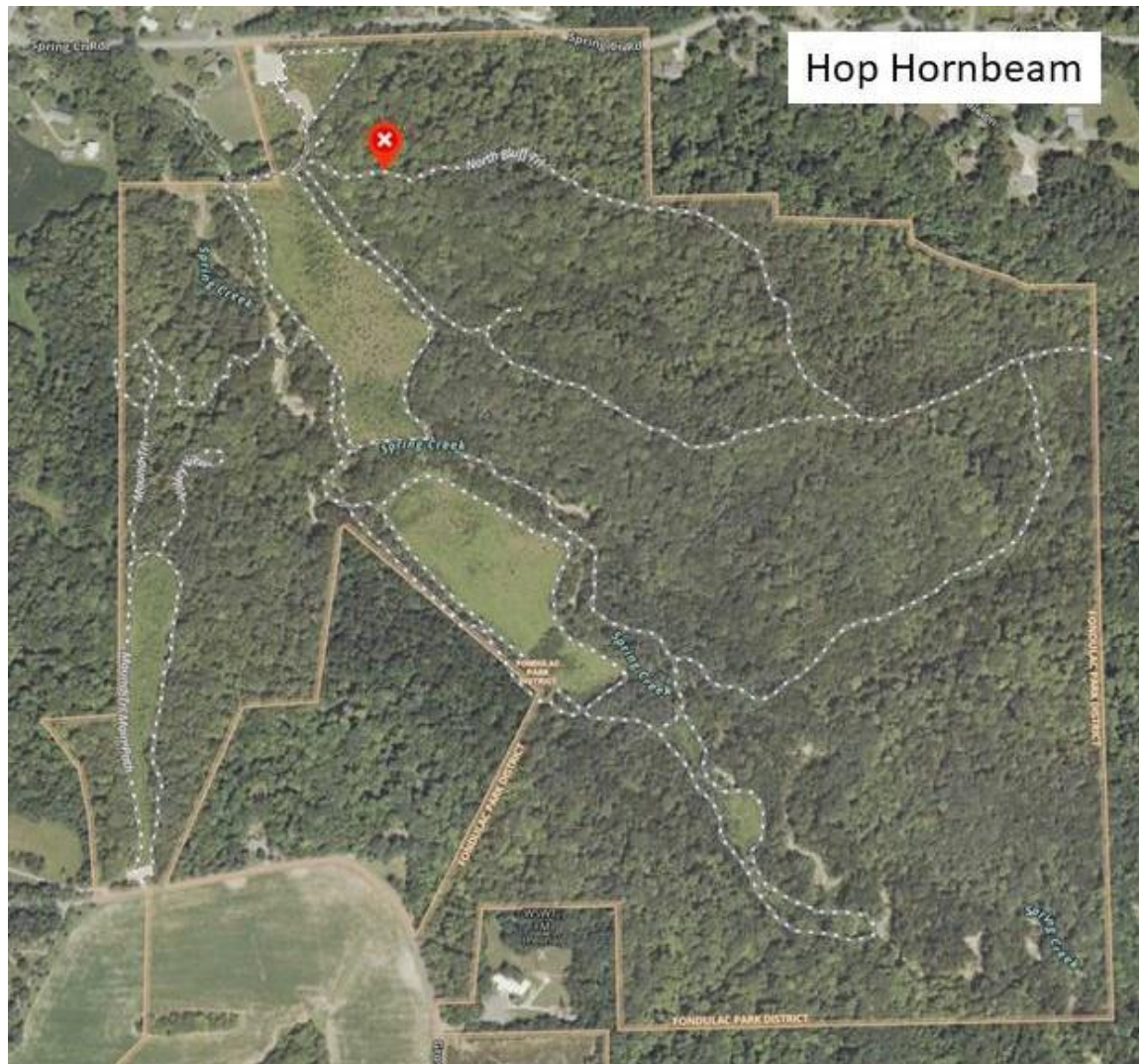
Status in Park: Occasional. Upland sites on hilltops and slopes.

Characteristics: Up to 60 feet in height, 12 inches in diameter; crown usually rounded; bark grayish-brown, with thin, shaggy, narrow, peeling strips; flowers catkins, April-May; fruits are nutlets, enclosed in inflated bladders, grouped in clusters, resembling hops.

Leaves: Alternate, simple, tapered to a sharp point; 2-6 inches long; edges sharply double-toothed; dark yellowish-green, soft.



Location of tagged tree:



Notes: Not of commercial importance although the wood is extremely dense and hard. It has some use for tool handles, mallets, and sleigh runners.