

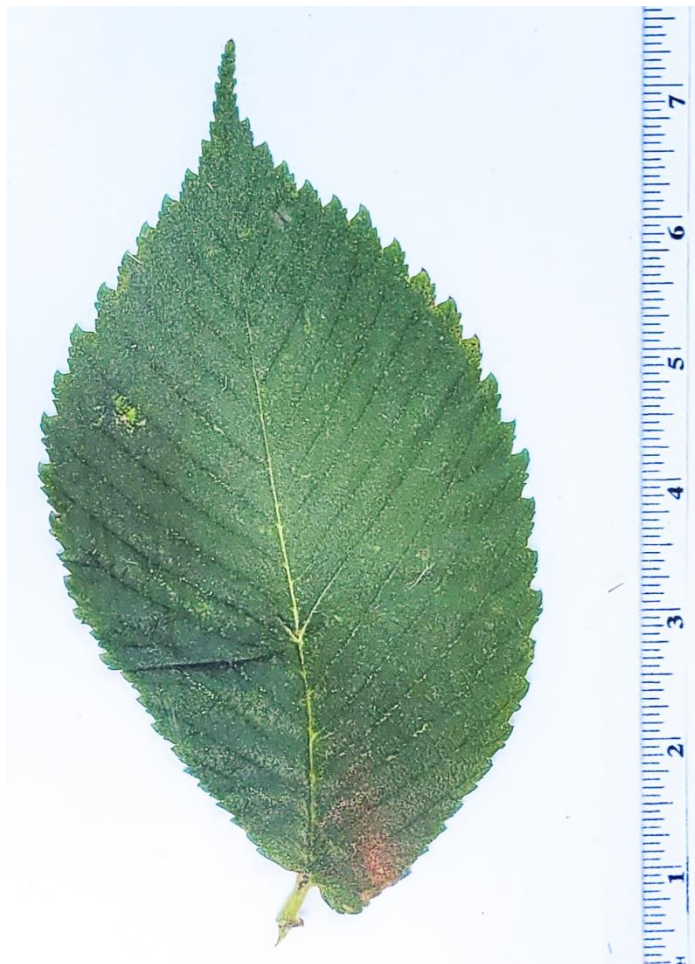
Slippery Elm (*Ulmus rubra*)

Origin: Native.

Status in Park: Widespread; in diverse habitats.

Characteristics: Up to 80 feet in height, 2 feet in diameter; crown broadly rounded or occasionally flat-topped; bark reddish brown to gray, with shallow furrows; flowers greenish, hairy, and small, in drooping clusters, present before leaves unfold; fruits winged, up to $\frac{3}{4}$ inch in diameter, each wing holding one seed.

Leaves: Alternate, simple; up to 7 inches long; coarsely double-toothed edge; upper surface green and very rough to the touch, underside smooth or hairy.



Location of tagged tree:



Notes: The rough, sandpapery texture as the asymmetrical leaves distinguishes this elm from the American elm. The wood is heavy, strong, and pale brown to reddish brown. It has some commercial value for lumber, rough flooring, containers, and other uses.