

White Mulberry (*Morus alba*)

Origin: Introduced from Asia.

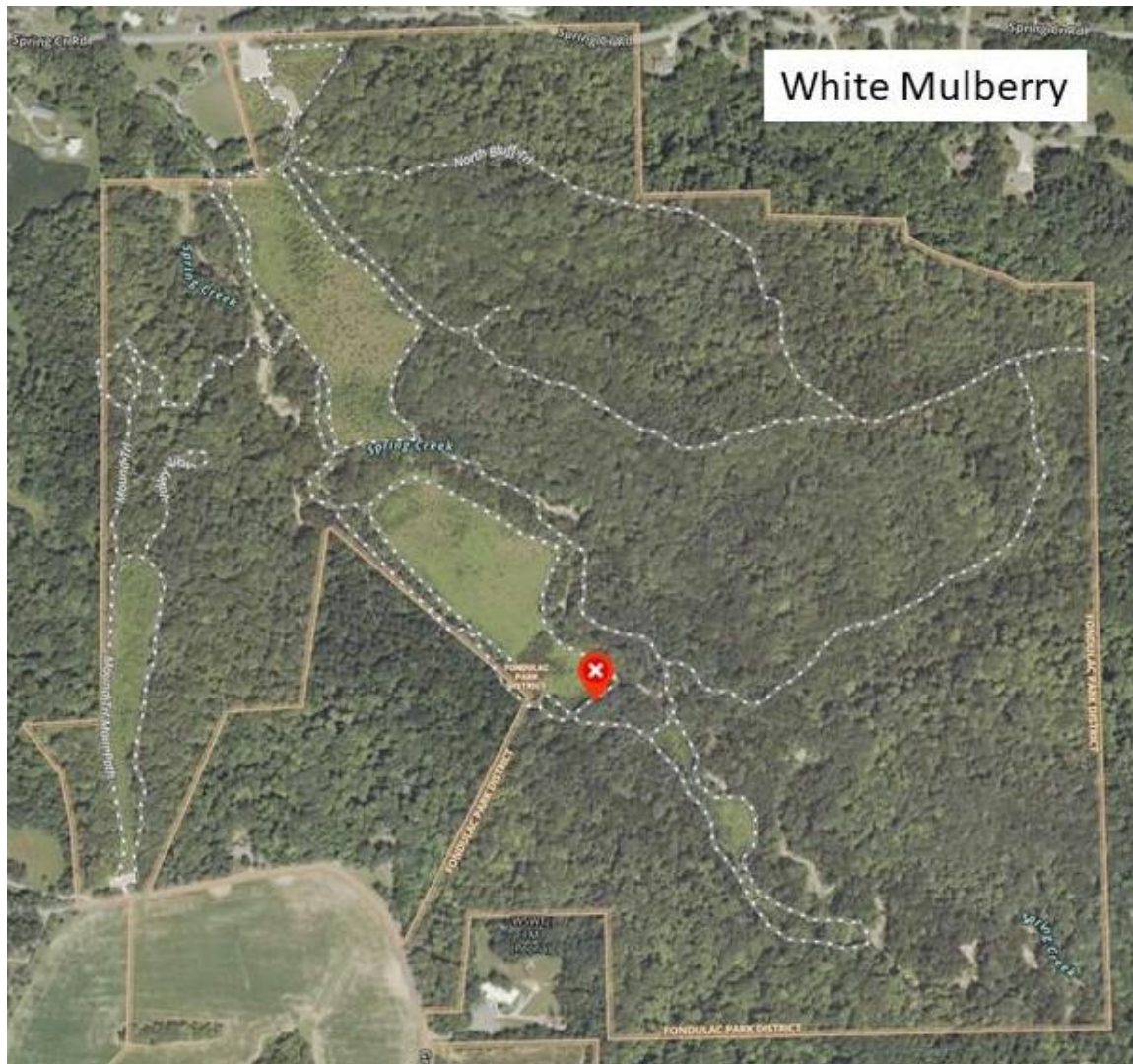
Status in Park: Widespread, especially in the old fields.

Characteristics: Up to 50 feet tall, 3 feet in diameter; crown broadly rounded, with many short branchlets; flowers are small and green and occur in groups; fruits are aggregations of small “drupes” formed from the clustered flowers, about 1 inch in length, may be white, red, or purple, are sweet and juicy.

Leaves: Alternate, simple; blades up to 5 inches long, either lobed or unlobed, toothed along edges; green and smooth on the upper surface, paler and smooth or slightly hairy beneath.



Location of tagged tree:



Notes: Wood is lightweight, soft, and coarse-grained. It is used for fence posts, furniture, and wood turning. The berries are edible. Mulberry leaves are food of silkworms. The trees were brought to the US in an attempt to establish a silk industry here. The attempt failed, but the trees have become firmly naturalized.