

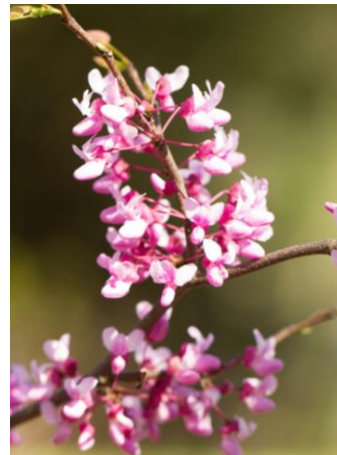
Redbud (*Cercis canadensis*)

Origin: Native.

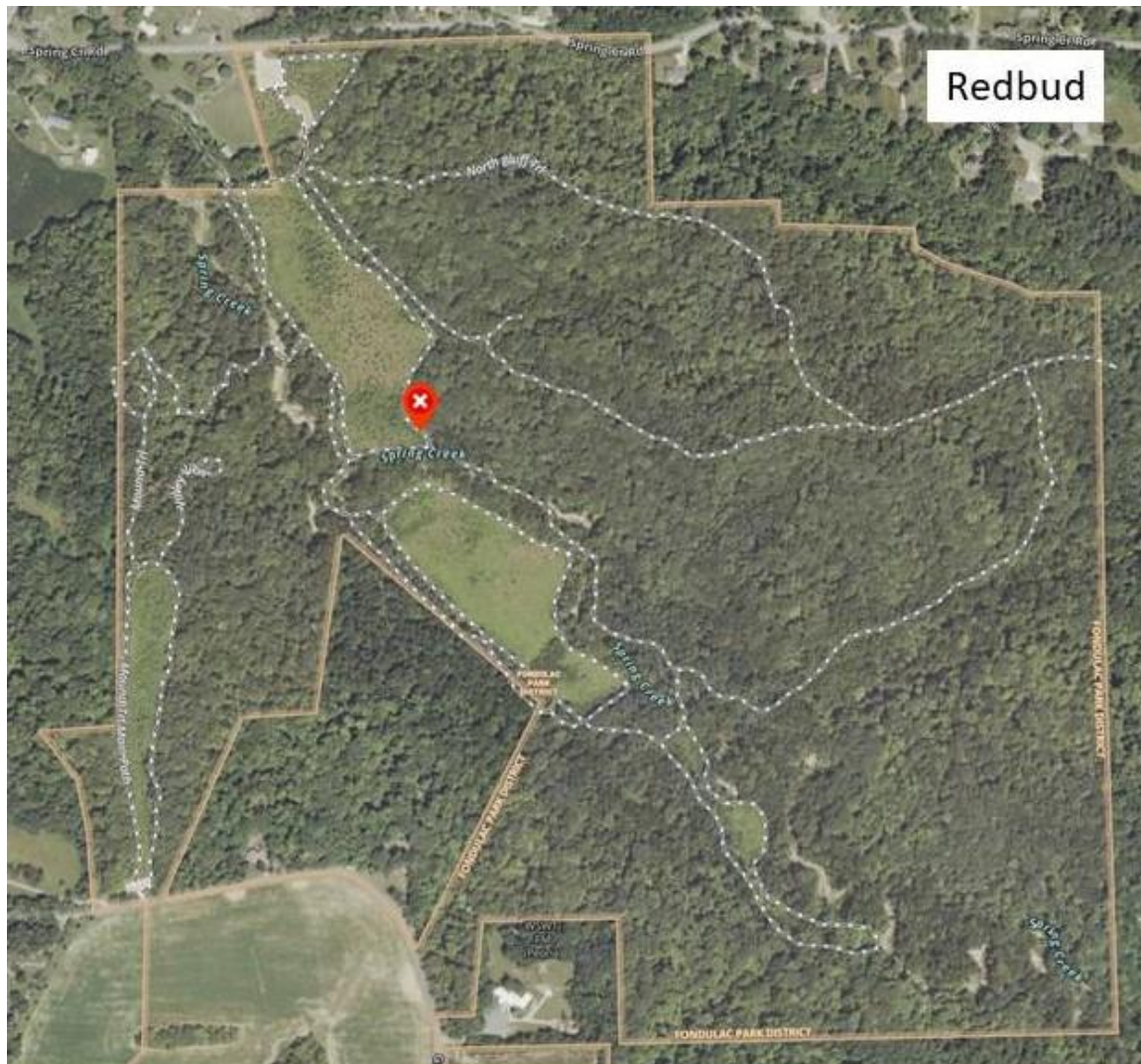
Status in Park: Widespread; bluffs, slopes, well-drained bottomland, and field edges; often in groups.

Characteristics: Small tree, up to 35 feet in height and 1 foot in diameter; crown usually broad and flattened; bark reddish brown, separating into long plates and thin scales; flowers are rose-purple, about ½ inch long, and growing in clusters; fruits are pods, up to 4 inches long, brown in color when mature, containing several seeds.

Leaves: Alternate, simple; up to 6 inches long with smooth edges; deep green color; surface above is smooth, beneath it is smooth or may have some hairs.



Location of tagged tree:



Notes: Redbud is a familiar tree used in landscaping. The beautiful flowers enhance yards in spring.