

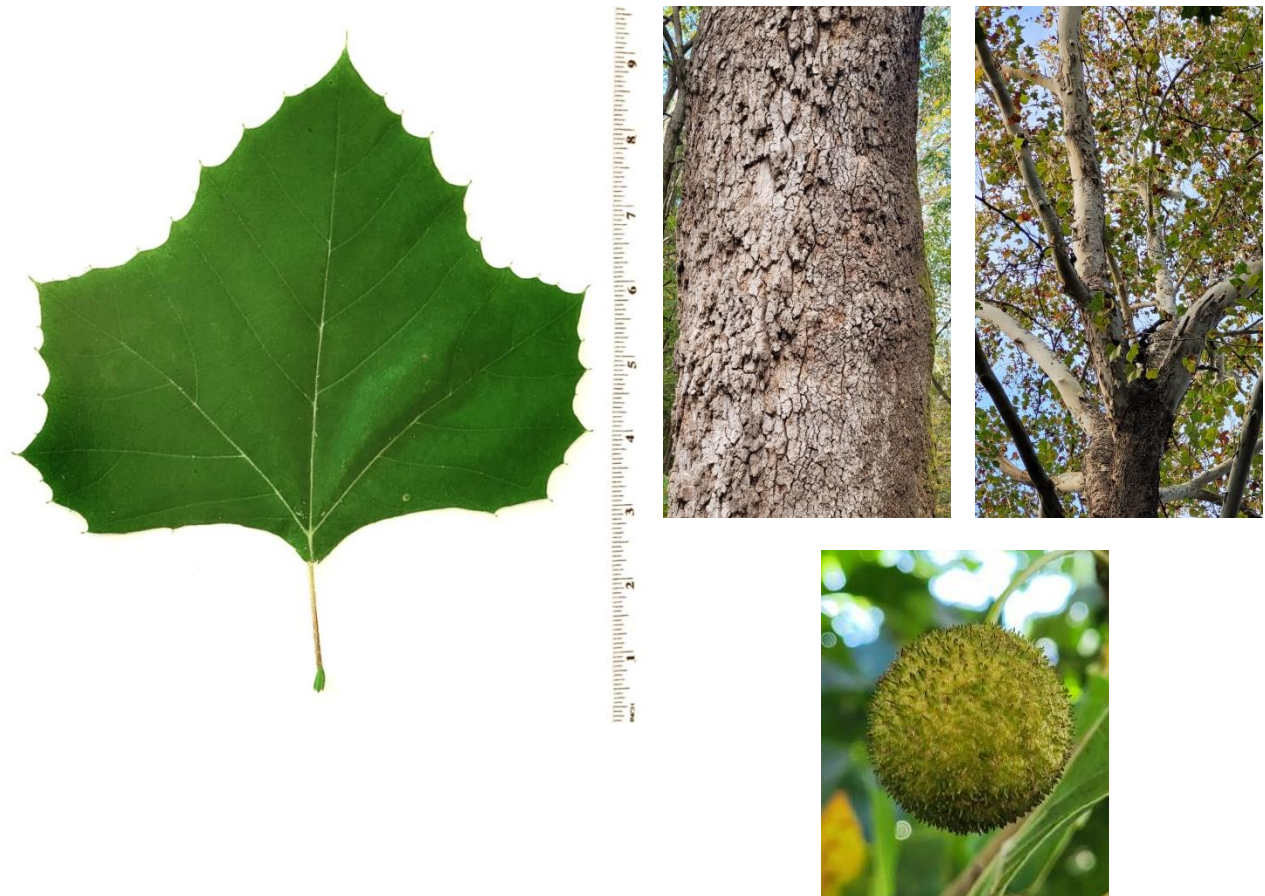
## Sycamore (*Platanus occidentalis*)

Origin: Native.

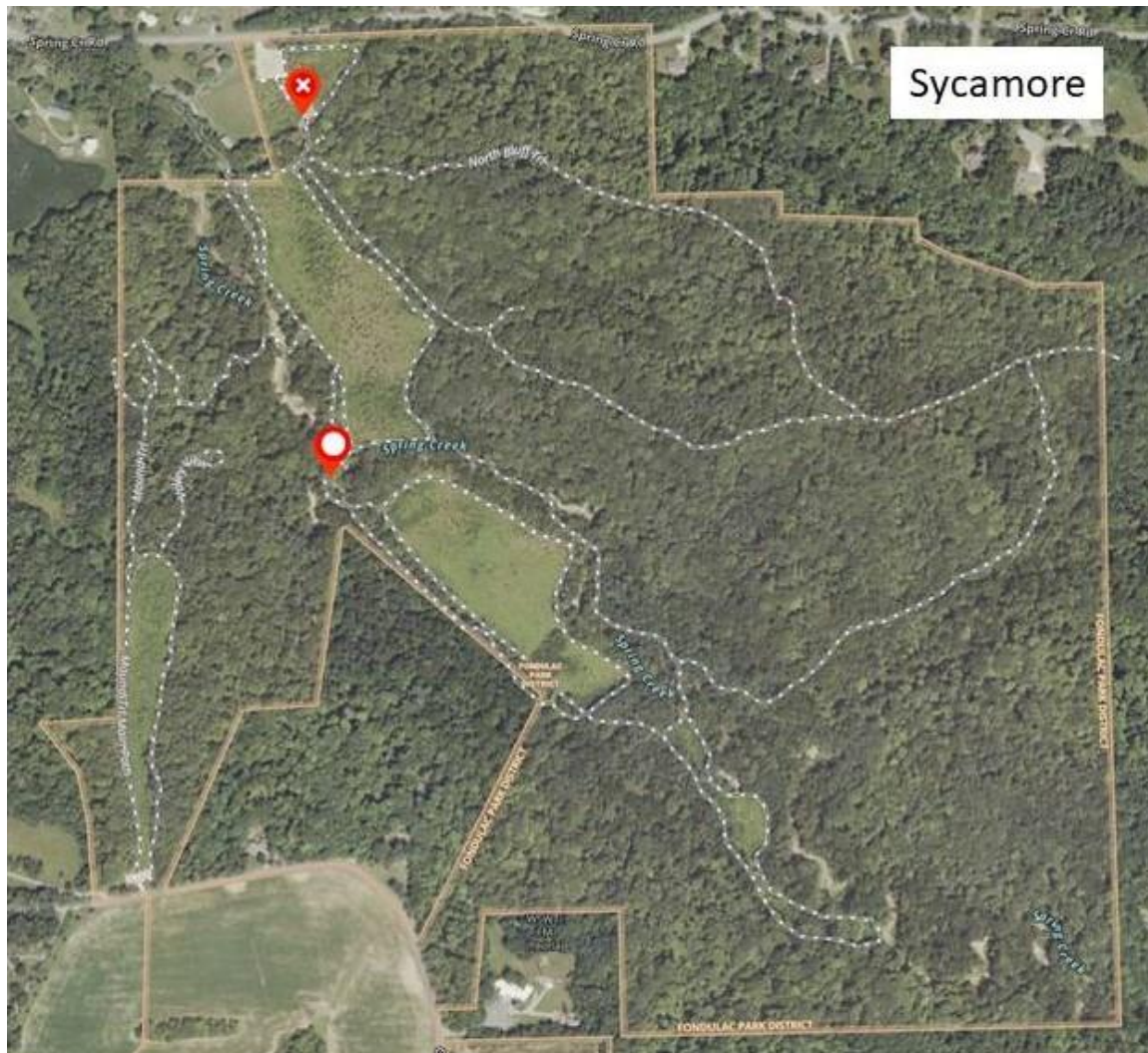
Status in Park: Widespread; mostly along Spring Creek and colonizing the old agricultural fields.

Characteristics: Sometimes more than 120 feet tall and 8 feet in diameter; crown broad, often irregular; bark reddish brown initially, quickly breaking into thin, flat scales that slough away in sections to expose large patches of whitish or greenish inner bark; flowers minute, crowded together in dense round heads; fruits contain many seeds in round, light brown heads, about 1 inch in diameter.

Leaves: Alternate, simple; blades divided into 3 or 5 shallow, sharp-pointed lobes, each being coarsely toothed; blade up to 7 inches in length; bright green on the upper surface and paler below, smooth on both surfaces.



Location of tagged trees:



White-centered symbol indicates leaves are too high to be easily seen.

Notes: The large leaves and the mottled bark readily distinguish this tree. The wood is moderately hard and strong and is light brown in color. It is used for lumber, furniture, flooring, woodenware, butcher's blocks, and other items.